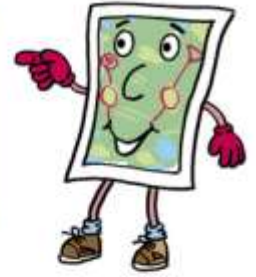


Orienteering is a challenging outdoor adventure sport enjoyed by people of all ages, abilities and backgrounds.



# Orienteering



Sarum Orienteering Club  
Sarum Summer Sampler



Come along and join in! Bring a friend with you!

- try a training activity!
- practice your current skills
- learn some new skills
- meet some more Juniors & compare notes!

.... Activities for Juniors and Improvers and those who have never tried Orienteering before!  
Come & have a chat & a drink afterwards even if you don't run!

## PROGRAMME 2016

Date	Venue	Activity	Location for social
Tuesday 19th April	<b>Arts centre, Salisbury</b> Park in Salt Lane Car Park SP1 1EG – come up to the Arts centre	<b>Fun courses</b> using Orienteering symbols & compass work <b>bring a compass, if you have one; (we do have spares)</b>	<b>The Five Bells</b> Salt Lane CP SP1 1EG (has loos)
Tuesday 17th May	<b>The Moot</b> The Moot, Moot Lane, Downton SP5 3JP Loos at the Borough playing fields in the Village	<b>Micro Score</b> – which side of the tree is it?? + <b>a small Maze</b>	<b>The Wooden Spoon</b> opposite North end of Moot Lane
Tuesday 21st June	<b>Victoria Park</b> (off A345, north of St Pauls roundabout – parking on site)	<b>Come &amp; see how many controls you can find in 45 minutes!</b>	<b>The Old Castle Harvester, Salisbury</b> - opposite Hudsons Field (loos here also)
Tuesday 12th July	<b>Churchill Gardens</b> Parking opposite Wiltshire College (loos here)	<b>Sarum Club Championships</b> Come and find the right tree!	<b>The Grey Fisher SP2 8DW</b> (off the Ring road)
Tuesday 16th August	<b>Old Sarum</b> , north Salisbury, off A345 - Park at the Harvester, opposite (loos here also)	<b>Come &amp; run around an ancient monument</b> and see what you can find in all of the ins & outs!	<b>The Old Castle Harvester, Salisbury</b> - opposite Hudsons Field
Tuesday 20th September	<b>Hub Club</b> (Salisbury & S. Wilts Sports Club, Skew Bridge, Wilton Road, Salisbury)	<b>Score course + butterfly loops!</b> See if you can keep going in the right direction!	<b>The Hub Club</b> SP2 9NY

Time: Starting at 6.00pm (Courses close 7.30pm) Cost: £2 seniors/ £0.50 juniors

Further Information: Contact – Charlotte Thornton  
07814207702/ Fixtures@sarumo.org.uk

